



KICKS ACCESSORIES



BEAUTY OF THE BEAST

WITH GREAT POWER COMES GREATER STYLING. SO, STYLE YOUR KICKS YOUR WAY BY CHOOSING FROM AN EXQUISITE RANGE OF EXTERIOR STYLING MODS AND BE SURE TO TURN SOME HEADS, AT THE TURN OF EVERY CORNER.



DOOR VISOR (PART NO. H08008HAAA)



ROOF GRAPHICS-1 (PART NO. K08108HAAF)



ROOF GRAPHICS-2 (PART NO. K08108HAAE)



TAILGATE ENTRY GUARD (PART NO. G69508HAAC)



FOG LAMP GARNISH (PART NO. F20228HAAA)



SIDE GRAPHICS-1 (PART NO. K08108HAAC)



SIDE GRAPHICS-2 (PART NO. K08108HAAB)



SPLASH GUARD (PART NO. F38E08HAAA)



BUMPER LOWER CHROME (PART NO. H08708HAAA)



BACKDOOR FINISHER (PART NO. 908108HCOA)



TAIL LAMP GARNISH (PART NO. K08108HAAA)



SCUFF PLATE (PART NO. G69508HAAB)



LED SCUFF PLATE (PART NO. G69508HAAA)



DOOR EDGE GUARD (PART NO. M1700AAAC4)



BACKDOOR GARNISH (PART NO. K08108HAAJ)



SIDE STEP (PART NO. G43128HAAC)
BRACKET (PART NO. G43128HAAB)



3D MAT (PART NO. G49508HAAD)



BUMPER CORNER PROTECTOR (PART NO. F38708HAAA)



CAR BODY COVER SILVER (PART NO. K90018HAAA)
CAR BODY COVER TYVEK (PART NO. K90018HAAB)

TAILOR-MAKE YOUR KICKS

INTERIOR STYLING IS AT ITS PUREST WHEN COMFORT MEETS CLASS. WHICH IS WHY, THE KICKS OFFERS YOU AN EXTENSIVE RANGE OF INTERIOR UPGRADES TO CHOOSE FROM, SO YOU CAN STYLE YOUR RIDE THE WAY YOU LOVE. IT'S ONE OF THE BEST WAYS TO GET YOUR TAILOR-MADE KICKS!



TRENDY APP-BASED MOOD LIGHT (ALSO AVAILABLE WITHOUT LED LIGHT) (PART NO. F81028HAAA)



STEERING WHEEL COVER OPTION 1 (PART NO. D84058HAAA)



STEERING WHEEL COVER OPTION 2 (PART NO. D84058HAAB)



STEERING WHEEL COVER OPTION 3 (PART NO. D84058HAAC)



STEERING WHEEL COVER OPTION 4 (PART NO. D84058HAAD)



CUSHION PILLOW (PART NO. KC7408HAAB)

SEAT BELT PAD & NECK REST (PART NO. KC7408HAAA)



SEAT COVER DESIGN-1 (WITH RR ARMREST) (PART NO. H79008HAAG)
SEAT COVER DESIGN-1 (WITHOUT RR ARMREST) (PART NO. H79008HAAA)



SEAT COVER DESIGN-2 (WITH RR ARMREST) (PART NO. H79008HAAH)
SEAT COVER DESIGN-2 (WITHOUT RR ARMREST) (PART NO. H79008HAAB)



REAR CURTAIN (PART NO. G97068HARA)



SEAT COVER DESIGN-3 (WITH RR ARMREST) (PART NO. H79008HAAI)
SEAT COVER DESIGN-3 (WITHOUT RR ARMREST) (PART NO. H79008HAAC)



SEAT COVER DESIGN-4 (WITH RR ARMREST) (PART NO. H79008HAAJ)
SEAT COVER DESIGN-4 (WITHOUT RR ARMREST) (PART NO. H79008HAAD)



SIDE CURTAIN (PART NO. G97068HASA)



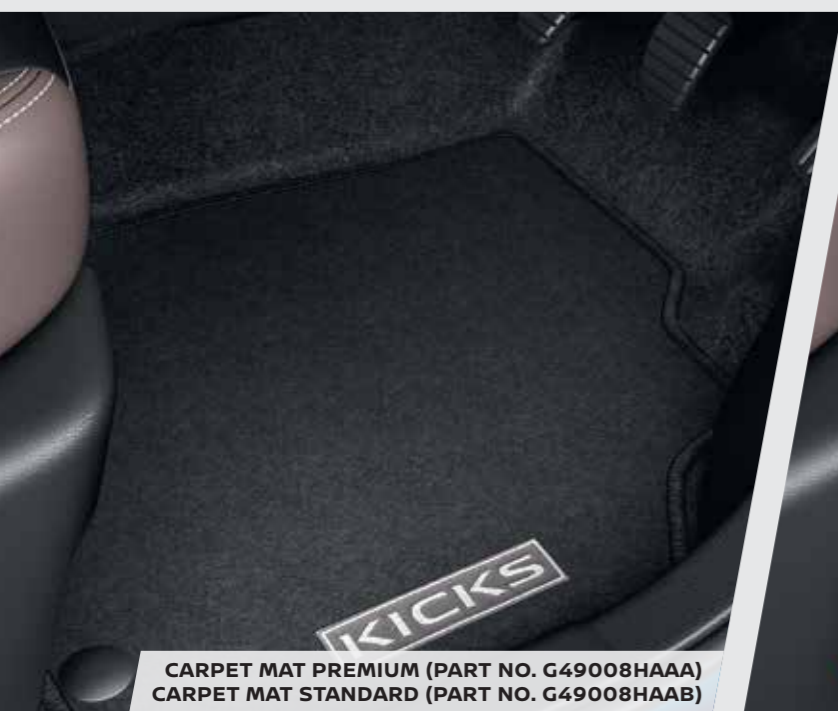
SEAT COVER DESIGN-5 (WITH RR ARMREST) (PART NO. H79008HAAK)
SEAT COVER DESIGN-5 (WITHOUT RR ARMREST) (PART NO. H79008HAAE)



SEAT COVER DESIGN-6 (WITH RR ARMREST) (PART NO. H79008HAAL)
SEAT COVER DESIGN-6 (WITHOUT RR ARMREST) (PART NO. H79008HAAF)



PVC LUGGAGE MAT (PART NO. H49048HAAA)



CARPET MAT PREMIUM (PART NO. G49008HAAA)
CARPET MAT STANDARD (PART NO. G49008HAAB)



PVC CABIN DESIGNER (PART NO. G49508HAAC)



PVC CABIN BLACK (PART NO. G49508HAAA)



PVC CABIN TRANSPARENT (PART NO. G49508HAAB)

ACCESSORIES PACKAGE

S/N	Part No	Part Name	
	KT0020AD01	Essential Pack Kicks	₹4699
1	F38E08HAAA	Splash Guard	
2	K90018HAAA	Body Cover Silver	
3	H49048HAAA	PVC Luggage Mat	
4	G49008HAAB	Carpet Mat standard	

Accessories worth ₹5047 for only ₹4699/- (7% OFF on MRP to customer)

S/N	Part No	Part Name	
	KT0020AD02	Style Pack Kicks	₹7999
1	H08708HAAA	Bumper Lower Chrome	
2	F20228HAAA	Fog Lamp Garnish	
3	G69508HAAC	Tailgate Entry Guard	
4	K08108HAAA	Tail Lamp Garnish	
5	F38708HAAA	Bumper Corner Protector	

Accessories worth ₹9396 for only ₹7999/- (15% OFF on MRP to customer)

MERCHANDISE ACCESSORIES



PAPER AIR FRESHENER - SQUASH - NISSAN (M1700AAA40)



KEY CHAIN - NISSAN (M1700AAA44)



GEL FRESHENER - SPORT - NISSAN (M1700AAA43)



OWNERSHIP FOLDER (M1700AAA45)



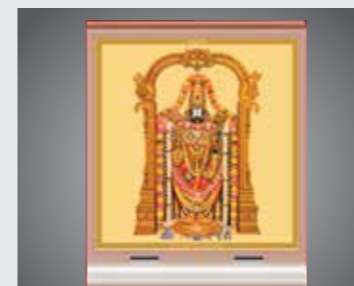
GEL PERFUME 60G_MIDNIGHT_NISSAN (M1700AAAC2)



TISSUE BOX - NISSAN (M1700AAA39)



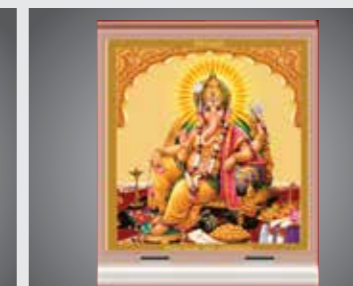
DUAL PORT MOBILE CHARGER (M1700AAAC3)



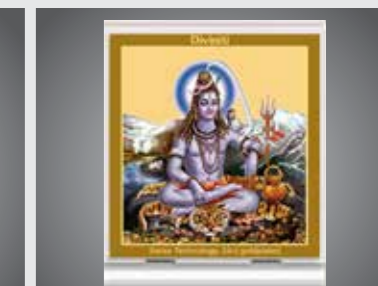
CAR FRAME ACRYLIC TIRUPATI (M1700AAA9)



CAR FRAME ACRYLIC GURU NANAK DEV (M1700AAB4)



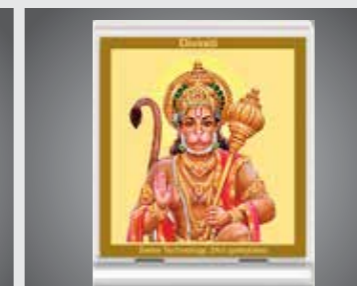
CAR FRAME ACRYLIC GANESHA (M1700AAB2)



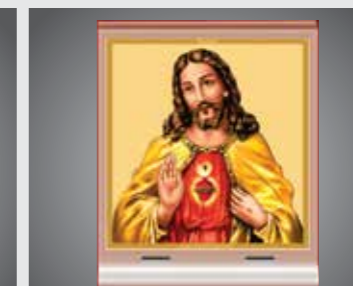
CAR FRAME ACRYLIC SHIVA (M1700AAA6)



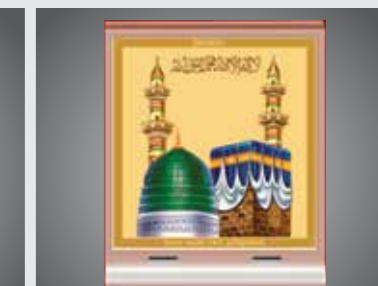
CAR FRAME ACRYLIC SAI BABA (M1700AAA5)



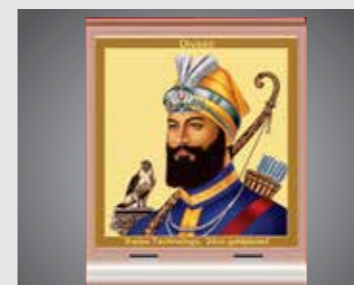
CAR FRAME ACRYLIC HANUMAN (M1700AAA8)



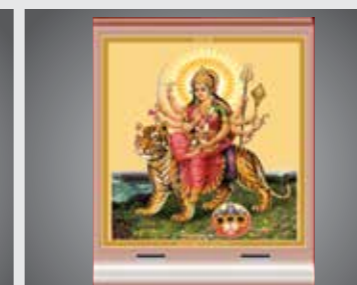
CAR FRAME ACRYLIC JESUS CHRIST (M1700AAB5)



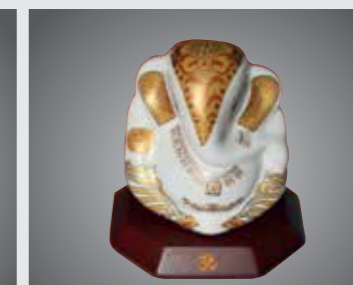
CAR FRAME ACRYLIC MAKKA (M1700AAB1)



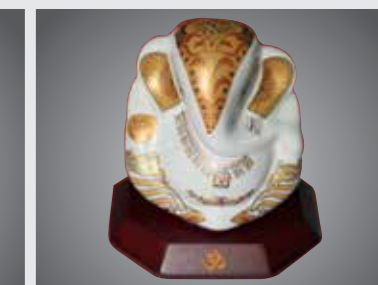
CAR FRAME ACRYLIC GURU GOBIND SINGH (M1700AAA7)



CAR FRAME ACRYLIC GODDESS DURGA (M1700AAB3)



GANESHA IDOL CERAMIC WITH MDF BASE (G1) (M1700AAB7)



GANESHA IDOL CERAMIC WITH MDF BASE (G2) (M1700AAB6)

Why you should choose Nissan Genuine Accessories - • 1 Year or 20,000 Kms Warranty • Quality Installation • Tailor Made Products • Durability Tested • Accessories Financing • Value for Money • Vehicle Warranty Remains Intact

ACCESSORIES:

S.NO.	PART NUMBER	DESCRIPTION	MRP (INR)
1	G69508HAAA	LED SCUFF PLATE	3299
2	G69508HAAB	SCUFF PLATE	1599
3	G69508HAAD	BLUETOOTH CONTROLLER	1899
4	F81028HAAA	MOOD LIGHT	2999
5	G69508HAAC	TAILGATE ENTRY GUARD	2999
6	H08008HAAA	DOOR VISOR	2399
7	F38E08HAAA	SPLASH GUARD	829
8	H79008HAAA	SEAT COVER DESIGN - 1 (FR & RR DETACHABLE HEAD REST WO REAR ARMREST)	7999
9	H79008HAAB	SEAT COVER DESIGN - 2 (FR & RR DETACHABLE HEAD REST WO REAR ARMREST)	7999
10	H79008HAAC	SEAT COVER DESIGN - 3 (FR & RR DETACHABLE HEAD REST WO REAR ARMREST)	7999
11	H79008HAAD	SEAT COVER DESIGN - 4 (FR & RR DETACHABLE HEAD REST WO REAR ARMREST)	7999
12	H79008HAAE	SEAT COVER DESIGN - 5 (FR & RR DETACHABLE HEAD REST WO REAR ARMREST)	7999
13	H79008HAAF	SEAT COVER DESIGN - 6 (FR & RR DETACHABLE HEAD REST WO REAR ARMREST)	7999
14	H79008HAAG	SEAT COVER DESIGN - 1 (FR & RR DETACHABLE HEAD REST WITH RR ARMREST)	7999
15	H79008HAAH	SEAT COVER DESIGN - 2 (FR & RR DETACHABLE HEAD REST WITH RR ARMREST)	7999
16	H79008HAAI	SEAT COVER DESIGN - 3 (FR & RR DETACHABLE HEAD REST WITH RR ARMREST)	7999
17	H79008HAAJ	SEAT COVER DESIGN - 4 (FR & RR DETACHABLE HEAD REST WITH RR ARMREST)	7999
18	H79008HAAK	SEAT COVER DESIGN - 5 (FR & RR DETACHABLE HEAD REST WITH RR ARMREST)	7999
19	H79008HAAL	SEAT COVER DESIGN - 6 (FR & RR DETACHABLE HEAD REST WITH RR ARMREST)	7999
20	D84058HAAA	STEERING WHEEL COVER OPTION 1	630
21	D84058HAAB	STEERING WHEEL COVER OPTION 2	630
22	D84058HAAC	STEERING WHEEL COVER OPTION 3	700
23	D84058HAAD	STEERING WHEEL COVER OPTION 4	630
24	G49508HAAA	PVC CABIN BLACK	999
25	G49508HAAB	PVC CABIN TRANSPARENT	1899
26	H49048HAAA	PVC LUGGAGE MAT	989
27	G49508HAAC	PVC CABIN DESIGNER	2999
28	G49008HAAA	CARPET MAT PREMIUM	2499
29	G49008HAAB	CARPET MAT STANDARD	1599
30	G97068HASA	SIDE CURTAIN	2100
31	G97068HARA	REAR CURTAIN	1600
32	K90018HAAA	CAR BODY COVER SILVER	1899
33	K90018HAAB	CAR BODY COVER TYVEK	5499
34	H08708HAAA	BUMPER LOWER CHROME	2399
35	F20228HAAA	FOG LAMP GARNISH	1199
36	K08108HAAA	TAIL LAMP GARNISH	2099
37	K08108HAAB	SIDE GRAPHICS - 2	1199
38	K08108HAAC	SIDE GRAPHICS - 1	1799
39	K08108HAAF	ROOF GRAPHICS - 1	4099
40	K08108HAAE	ROOF GRAPHICS - 2	5999
41	KC7408HAAA	SEATBELT PAD & NECK REST	999
42	KC7408HAAB	CUSHION PILLOW	899
43	G43128HAAC	SIDE STEP WITH SS WITHOUT BRACKET	14015
44	G43128HAAB	SIDE STEP BRACKET	4524
45	G49508HAAD	3D MAT - KICKS	2999
46	F38708HAAA	BUMPER CORNER PROTECTOR	1245
47	K08108HAAJ	BACKDOOR GARNISH	1350
48	908108HCOA	BACKDOOR FINISHER	3899
49	M1700AAAC4	DOOR EDGE GUARD	310
50	M1700AAAC3	USB CHARGER	999
51	M1700AAAA5	CAR FRAME ACRYLIC SAI BABA	350
52	M1700AAAA6	CAR FRAME ACRYLIC SHIVA	350
53	M1700AAAA7	CAR FRAME ACRYLIC GURU GOBIND SINGH	350
54	M1700AAAA8	CAR FRAME ACRYLIC HANUMAN	350
55	M1700AAAA9	CAR FRAME ACRYLIC TIRUPATI	299
56	M1700AAAB1	CAR FRAME ACRYLIC MAKKA	279
57	M1700AAAB2	CAR FRAME ACRYLIC GANESHA	250
58	M1700AAAB3	CAR FRAME ACRYLIC GODDESS DURGA	250
59	M1700AAAB4	CAR FRAME ACRYLIC GURU NANAK DEV	350
60	M1700AAAB5	CAR FRAME ACRYLIC JESUS CHRIST	350
61	M1700AAAB6	GANESHA IDOL CERAMIC WITH MDF BASE (G2)	270
62	M1700AAAB7	GANESHA IDOL CERAMIC WITH MDF BASE (G1)	250
63	M1700AAA40	PAPER AIR FRESHNER - SQUASH - NISSAN	99
64	M1700AAA43	GEL FRESHNER - SPORT - NISSAN	330
65	M1700AAA39	TISSUE BOX - NISSAN	80
66	M1700AAA45	OWNERSHIP FOLDER - NISSAN	310
67	M1700AAA44	KEY CHAIN - NISSAN	120
68	M1700AAAC2	GEL PERFUME 60G_MIDNIGHT_NISSAN	110

ACCESSORIES PACKAGE:

S.NO.	PART NUMBER	DESCRIPTION	MRP (INR)
1	KT0020AD01	ESSENTIAL PACK_KICKS	4699
2	KT0020AD02	STYLE PACK_KICKS	7999

- SEAT COVER SHOULD NOT BE INSTALLED IN VEHICLE HAVING SEAT SIDE AIRBAG (UPPER) SEGMENT VEHICLE
- STEERING WHEEL COVER SHOULD NOT BE INSTALLED IN (UPPER) VARIANT VEHICLE (ALREADY HAVING LEATHER STEERING WHEEL COVER)
- LED SCUFF PLATE AND MOOD LIGHT TO BE INSTALLED ALONG WITH BLUETOOTH CONTROLLER
- BOTH CAN OPERATE WITH ONE BLUETOOTH CONTROLLER. THESE ACCESSORIES ARE CARRY FORWARD ACCESSORIES WITH REFERENCE TO (**ASB/2018/120 & ASB/2019/060**)